

WPS-SF Water-Tank Poster Stand, Snap-Frame Assembly Instructions (All Sizes)

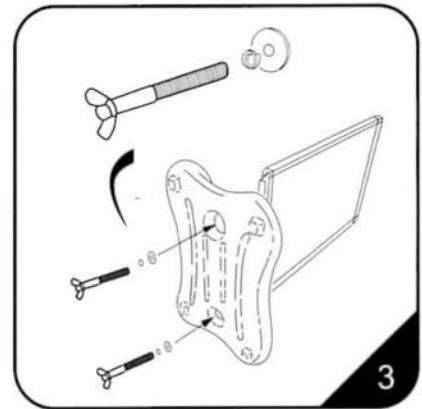
Note: to avoid any accidental loss of components, please do not dispose of packaging until the sign is fully assembled.



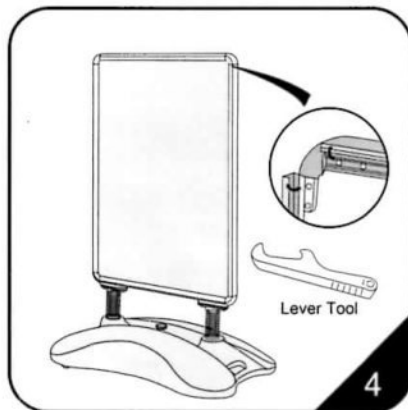
The carton contains a water-filled base and a poster frame.



Insert the legs of the poster frame into the holes of the water-filled base.



Rest the poster frame on the ground on its side, use the fixings shown to attach the water-filled base to the poster frame.



Use the lever tool to open the poster frame sides.



Place the poster in & then the clear plastic poster cover before closing the poster frame sides. Repeat for the second side. The sign is now ready to be moved.



Please fill with water, or use sand in the base.

NOTE: When moving the stand while the tank is full, carefully lift the side of the base with the Carrying Handle and tilt the stand up so it rolls on the wheels located on the opposite side of the handle. Do not attempt to roll the stand over steps or curbs. Always place the stand on a flat, even surface.